



**JST10F-800CW 10A TRIAC**

Rev.A.1.0

DESCRIPTION:

The JST10F-8000



GI

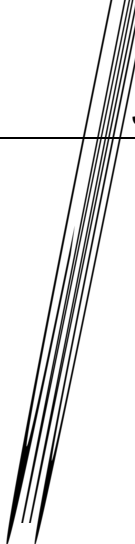
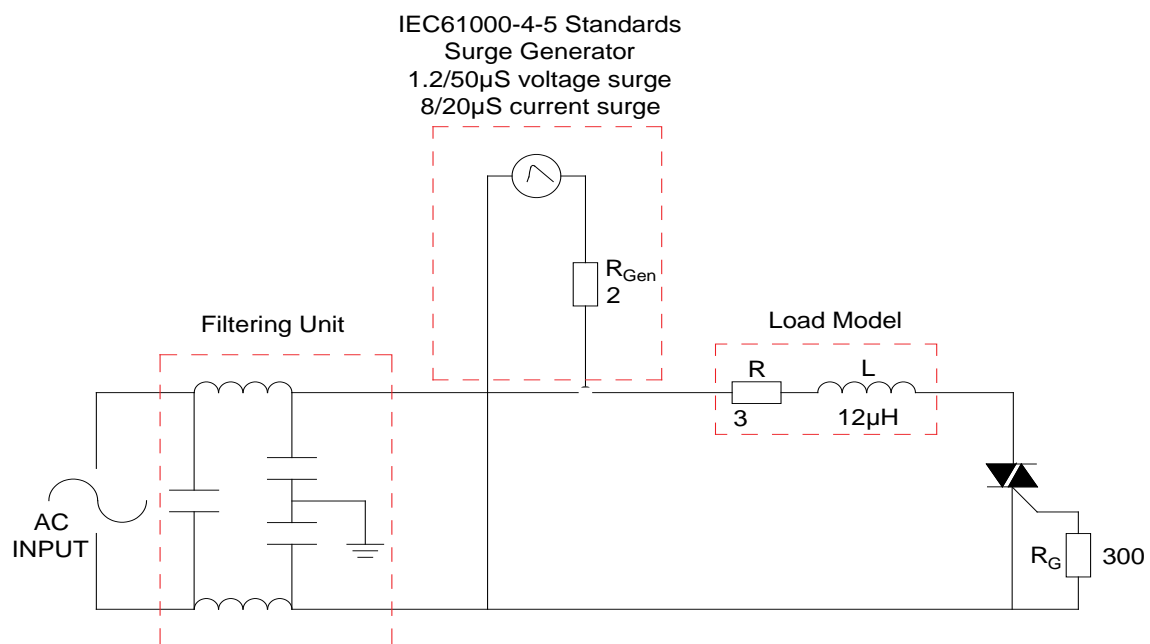




FIG.7 Test circuit for inductive and resistive loads to IEC-61000-4-5 standards

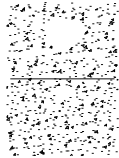


ORDERING INFORMATION

|            |  |
|------------|--|
| Order code |  |
|------------|--|


STfD0 Tc 0Tw 0.493 0 Tm ( )Tj 15.007 Ec15Tc 0 Tw 10.56 0 0 10224 69866 728.4[(Tm .08 - ( )5 (e)]TJ 0 Tc 0 Tw18.307

PACKAGE MECHANICAL DATA



Information furnished in this document is believed to be accurate and reliable. However, Jiangsu JieJie Microelectronics Co., Ltd. assumes no responsibility for the consequences of use without consideration for such information nor use beyond it. Information mentioned in this document is subject to change without notice, apart from that when an agreement is signed, Jiangsu JieJie complies with the agreement.

Products and information provided in this document have no infringement of patents. Jiangsu JieJie assumes no responsibility for any infringement of other rights of third parties which may result from the use of such products and information. This document supersedes and replaces all information previously supplied.

 is a registered trademark of Jiangsu JieJie Microelectronics Co., Ltd.

Copyright ©2023 Jiangsu JieJie Microelectronics Co., Ltd. Printed All rights reserved.